



8um to 14um Camera

VCJKX-384

Uncooled Microbolometer Camera

Resolution
384(H) x 288(V)

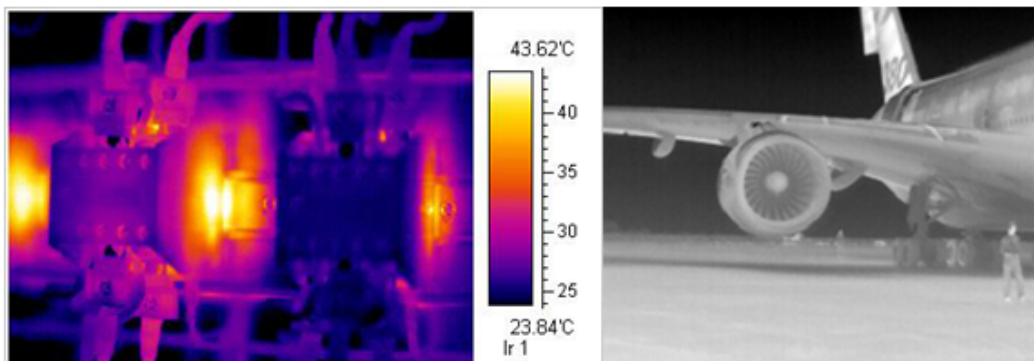


Key Features

- 8um to 14um spectral range.
- 384X288 resolution
- FPA, Uncooled Microbolometer Sensor
- Composite video output
- 0.05C to 30C Thermal Sensitivity
- Optional lens configuration.

Applications

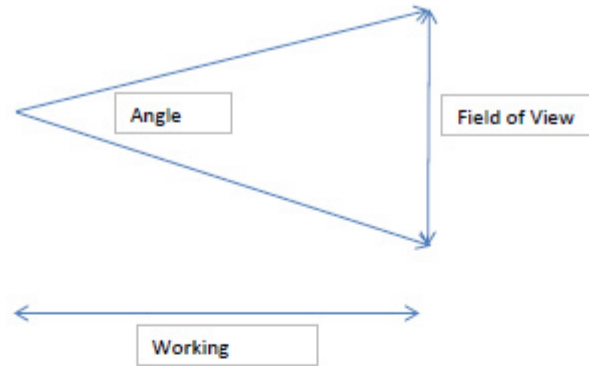
- Thermal Imaging
- Inspections
- Security



Specifications:

Camera	JKX 384(160)
Imaging Performance	
Detector Type	FPA, uncooled microbolometer
Resolution	384×288 (160×120)
Spectral range	8~14 μ m
Thermal sensitivity	0.05 $^{\circ}$ C@30 $^{\circ}$ C (0.08 $^{\circ}$ C@30 $^{\circ}$ C)
Focal length/FOV	9mm: 60 $^{\circ}$ ×44 $^{\circ}$ 13mm: 42 $^{\circ}$ ×31 $^{\circ}$ 19mm: 29 $^{\circ}$ ×22 $^{\circ}$ 35mm: 14 $^{\circ}$ ×10 $^{\circ}$ 50mm: 11 $^{\circ}$ ×8 $^{\circ}$ 100mm: 5.5 $^{\circ}$ ×4.1 $^{\circ}$
Interfaces	
Analog video	Yes
USB storage Optional	
RJ45 network	Optional
Power	
requirements	12VDC
Consumption Start-up time	≤5W ≤5s
Environment specification	
Operating temperature range	-40 $^{\circ}$ f to 60 $^{\circ}$ f
Storage temperature range	-50 $^{\circ}$ f to 70 $^{\circ}$ f
Humidity Encapsulation Shock resistance Vibration resistance	≤95%, non-condensing IP54 25G 2G
Physical characteristic	
Size(L*W*H)	143mm*78mm*84mm
Weight	0.5kg
Computer Recommended Configuration	
Monitoring computer	Recommended configuration when using software: Windows XP OS, 2GHz dual-core CPU or above, 2G RAM or above, 100M or more NICs, 500G hard drive or above, 1280×800 resolution or above, connect to the internet net work

Lens Specifications:



Focus Distance	8mm	9.6mm	13mm	19mm	25mm	35mm	50mm	100mm
Angle(d)	70°X52°	60°X44°	42°X31°	29°X22°	22°X16.5°	14°X10°	11°X8°	5.5°X4.1°
WD(m)	FoV(m)	FoV(m)	FoV(m)	FoV(m)	FoV(m)	FoV(m)	FoV(m)	FoV(m)
0.5	2.75	1.73	0.90	0.55	0.40	N/A	N/A	N/A
1	5.49	3.46	1.80	1.11	0.81	0.50	N/A	N/A
5	27.47	17.32	9.00	5.54	4.04	2.49	1.94	0.96
10	54.95	34.64	18.01	11.09	8.08	4.99	3.89	1.93
15	82.42	51.96	27.01	16.63	12.12	7.48	5.83	2.89
20	109.90	69.28	36.02	22.17	16.16	9.97	7.78	3.85
30	164.85	103.92	54.02	33.26	24.24	14.96	11.66	5.78
50	274.75	173.21	90.04	55.43	40.40	24.93	19.44	9.63
100	549.50	346.41	180.08	110.86	80.81	49.87	38.88	19.26

Focus Distance	8mm	9.6mm	13mm	19mm	25mm	35mm	50mm	100mm
Angle(d)	70°X52°	60°X44°	42°X31°	29°X22°	22°X16.5°	14°X10°	11°X8°	5.5°X4.1°
WD(in)	FoV(in)	FoV(in)	FoV(in)	FoV(in)	FoV(in)	FoV(in)	FoV(in)	FoV(in)
20	108	68	35	22	16	N/A	N/A	N/A
39	216	136	71	44	32	20	N/A	N/A
197	1081	682	354	218	159	98	76	38
394	2163	1364	709	437	318	196	153	76
591	3245	2046	1063	655	477	294	230	114
787	4327	2728	1418	873	636	393	306	152
1181	6490	4091	2127	1309	954	589	459	228
1969	10817	6819	3545	2182	1591	981	765	379
3937	21634	13638	7090	4365	3181	1963	1531	758

Al Sabeh

Phone: 714-296-5768, Fax: 858-613-1815



Visions Connection

11409 West Bernardo Court, San Diego, Ca. 92127

Al@visionsconnection.com

www.Visionsconnection.com