



USB 3.0 Fast Speed Cameras

Color cameras Brochures

VGA, SXGA and 4MP

Key Features

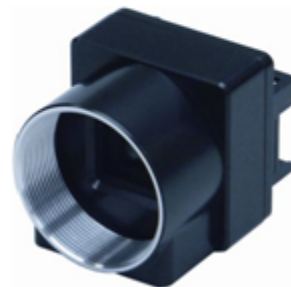
- USB3.0 Interface
- Cameras Resolutions VGA, SXGA and 4MP
- 1/3" CCD Sensors
- 1" 4MP CMOS sensor
- VGA 125FPS, and SXGA 30FPS
- 4MP 90FPS
- CCD color 16Bit YUV 4:2:2/ RGB 24Bit/ Bayer 8bit
- CMOS Bayer 8bit
- C-mount
- Dimension 29mm (w)X 29mm (H) X16mm (D)

Applications

- Pick and Place machines.
- High speed inspection and Automation.
- Wire bonding and Fluid dispensing
- AOI, SPI and 2D 3D inspection
- X-Y Measurements and X-ray inspections



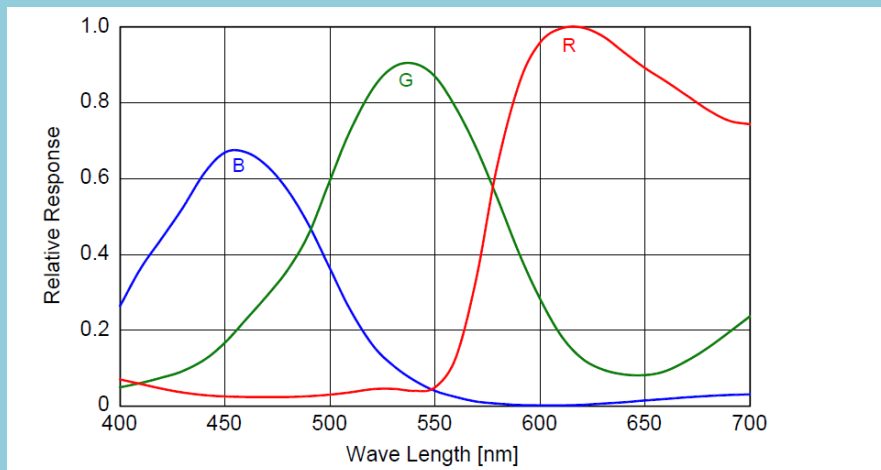
USB 3.0 Interface



Specifications

Color Cameras

Model	VC-BU030C	VC-BU030CF	VC-BU130C	VC-BU130CF
Imager	all-pixel-data-readout interline transfer CCD			
Pixel	VGA 659 (H) x 494 (V)		SXGA 1296 (H) x 966 (V)	
Frame rate	125fps		30fps	
Scanning area	4.88mm (H) x 3.66mm (V) (1/3 type)		4.86mm (H) x 3.62mm (V) (1/3 type)	
Pixel size	7.4 μ m x 7.4 μ m		3.75 μ m x 3.75 μ m	
Color filter	RGB primary color mosaic-on-tip color filter			
IR cut filter	Nothing	Existence	Nothing	Existence
Scan method	Progressive			
Image output format	YUV4:2:2 16bit / YUV4:1:1 12bit / RGB 24bit / Bayer 10bit / Bayer 8bit / Mono 8bit			
Aspect ratio	4:3			
Gain	0 to +18dB (factory setting 0 dB)			
White balance	Manual white-balance / One-push white-balance			
Gamma	$\gamma=1.0$ to 0.45 (factory setting $\gamma=1.0$)			
Standard sensitivity with IR-cut filter	3500lx F5.6, 1/125s		1250lx F5.6, 1/30s	
Minimum sensitivity	F1.4, Gain +18dB, Video level 50%		14lx	
Interface	USB3.0			
Power supply	DC5V			
Power consumption	2.7W			
Lens mount	C-mount			
External dimension	29(W)mm x 29 (H)mm x 13(D)mm (Not including protrusion)			
Mass	approx. 27g			



Model	VC-BU406MC	VC-BU406MCF
Imager	CMOS image sensor	
Pixel	4M 2048 (H) x 2048 (V)	
Frame rate	90fps	
Scanning area	11.26mm (H) x 11.26mm (V) (1/1 type)	
Pixel size	5.5µm x 5.5µm	
Color filter	RGB primary color mosaic-on-tip color filter	
IR cut filter	Nothing	Existence
Scan method	Progressive	
Electronic shutter method	Global shutter	
Image output format	Bayer 8bit	
Aspect ratio	1:1	
Gain	x0 to x8 (factory setting: x1)	
White balance	Manual white-balance / One-push white-balance	
Gamma	$\gamma=1.0$ to 0.45 (factory setting $\gamma=1.0$)	
Standard sensitivity with IR-cut filter	4800lx F8, 1/90s	
Minimum sensitivity	F1.4, Gain x8, Video level 50% 10lx	
Interface	USB3.0	
Power supply	DC5V	
Power consumption	2.7W	
Lens mount	C-mount	
External dimension	29(W)mm x 29 (H)mm x 16(D)mm (Not including protrusion)	
Mass	approx. 32g	

Al Sabeh

Phone: 714-296-5768, Fax: 858-613-1815



Visions Connection

11409 West Bernardo Court, San Diego, Ca. 92127

Al@visionsconnection.com

www.Visionsconnection.com