



USB 3.0 Fast Speed Cameras

B/W cameras Brochures

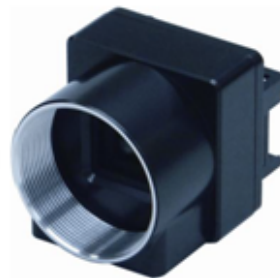
VGA, XGA, SXGA 2MP and 4MP

Key Features

- USB3.0 Interface
- Cameras Resolutions VGA, XGA, SXGA, 2MP and 4MP
- 1/2" and 1/3" CCD Sensors
- 2/3" 2MP CMOS sensor and 1" 4MP CMOS sensor
- VGA 125FPS, XGA 40FPS, SXGA 30FPS
- 2MP 170FPS and 4MP 90FPS
- CCD mono 10Bit and 8bit and CMOS mono 8bit
- C-mount
- Dimension 29mm (w)X 29mm (H) X16mm (D)

Applications

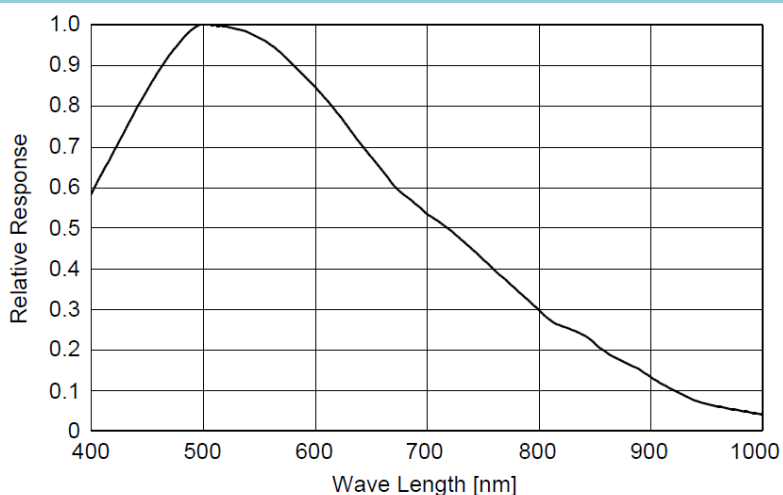
- Pick and Place machines.
- High speed inspection and Automation.
- Wire bonding and Fluid dispensing
- AOI, SPI and 2D 3D inspection
- X-Y Measurements and X-ray inspections



Specifications

B/W Cameras

Model	VC-BU031	VC-BU030	VC-BU080	VC-BU130
Imager	all-pixel-data-readout interline transfer CCD			
Pixel	VGA 659(H) x 494(V)		XGA 1034(H) x 779(V)	SXGA 1296(H) x 966(V)
Frame rate	125fps		40fps	30fps
Scanning area	6.52mm x 4.89mm (1/2 type)	4.88mm x 3.66mm (1/3 type)	4.81mm x 3.62mm (1/3 type)	4.86mm x 3.62mm (1/3 type)
Pixel size	9.9 μ m x 9.9 μ m	7.4 μ m x 7.4 μ m	4.65 μ m x 4.65 μ m	3.75 μ m x 3.75 μ m
Scan method	Progressive			
Aspect ratio	4:3			
Gain	0 to +18dB (default setting 0 dB)			
Gamma	$\gamma=1.0$ to 0.45(default setting $\gamma=1.0$)			
Standard sensitivity	1700lx F5.6, 1/125s		1700lx F5.6, 1/40s	1300lx F8, 1/30s
Minimum sensitivity	F1.4, Gain +18dB, Video level 50% 7lx			3lx
Image output format	Mono 10bit / Mono 8bit			
Interface	USB3.0			
Power supply	DC5V			
Power consumption	2.6W			
Lens mount	C-mount			
External dimension	29(W)mm x 29 (H)mm x 13(D)mm (Not including protrusion)			
Mass	approx. 27g			



Model	VC-BU205M	VC-BU406M
Imager	CMOS image sensor	
Pixel	2M 2048(H) x 1088(V)	4M 2048(H) x 2048(V)
Frame rate	170fps	90fps
Scanning area	11.26mm x 5.98mm (2/3 type)	11.26mm x 11.26mm (1/1 type)
Pixel size	5.5 μ m x 5.5 μ m	
Scan method	Progressive	
Electronic shutter method	Global shutter	
Aspect ratio	2:1	1:1
Gain	x0 to x8 (factory setting: x1)	
Gamma	γ =1.0 to 0.45 (factory setting γ =1.0)	
Standard sensitivity	3800lx F8, 1/200s	3500lx F11, 1/90s
Minimum sensitivity	F1.4, Gain +18dB, Video level 50%	
	8lx	4lx
Image output format	Mono 8bit	
Interface	USB3.0	
Power supply	DC5V	
Power consumption	2.7W	
Lens mount	C-mount	
External dimension	29(W)mm x 29 (H)mm x 16(D)mm (Not including protrusion)	
Mass	approx. 32g	

Al Sabeh

Phone: 714-296-5768, Fax: 858-613-1815



Visions Connection

11409 West Bernardo Court, San Diego, Ca. 92127

Al@visionsconnection.com

www.Visionsconnection.com